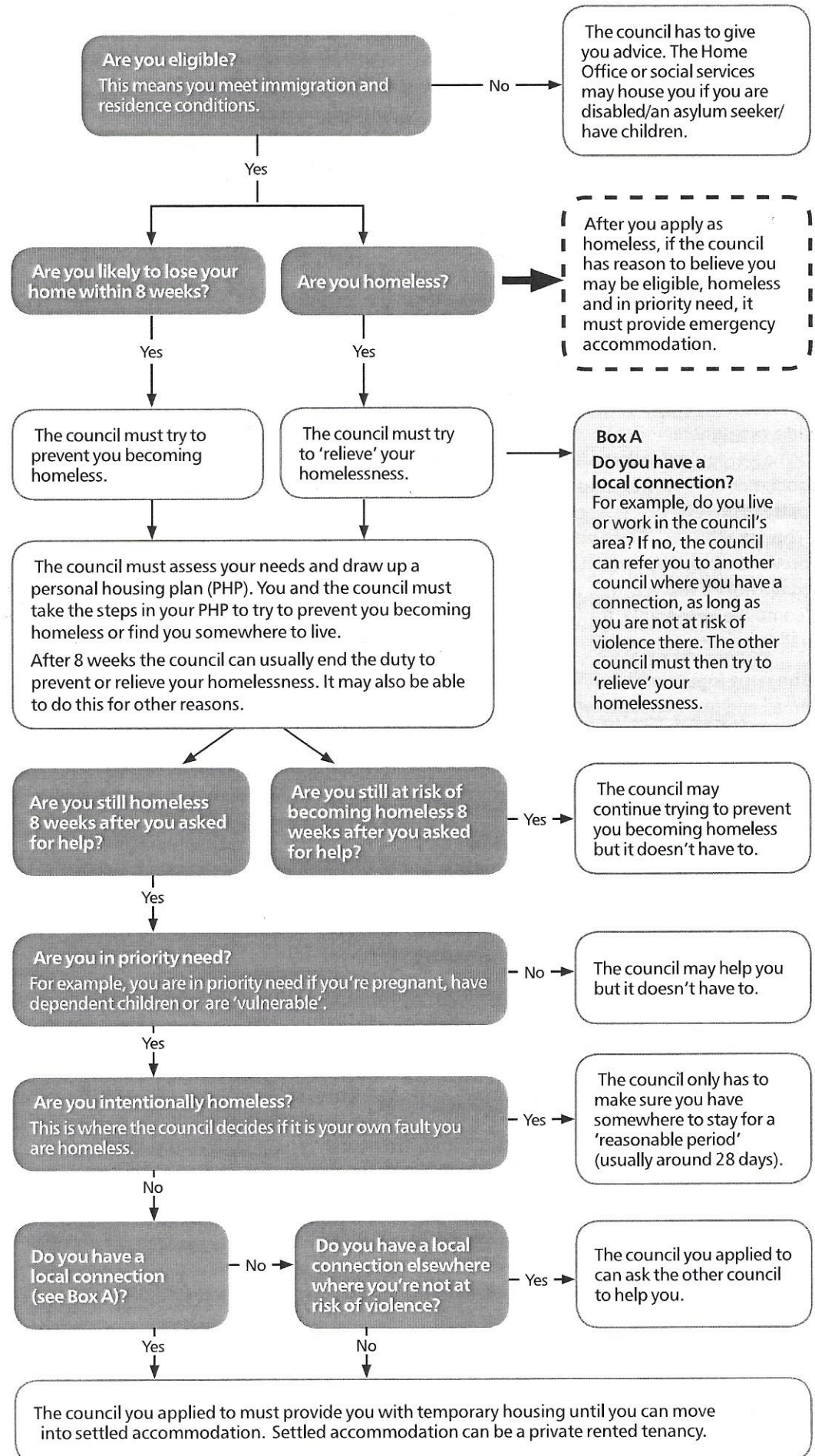


Applying as homeless

This flowchart provides an overview of the steps the council will follow if you apply for help as homeless.

You can get advice on homelessness and how to challenge a decision from Shelter's free* housing advice helpline 0808 800 4444, a local Shelter advice service or local Citizens Advice office, or by visiting https://england.shelter.org.uk/housing_advice

*Calls are free from UK landlines and main mobile networks.



Note
Information contained in this factsheet is correct at the time of publication. Please check details before use.